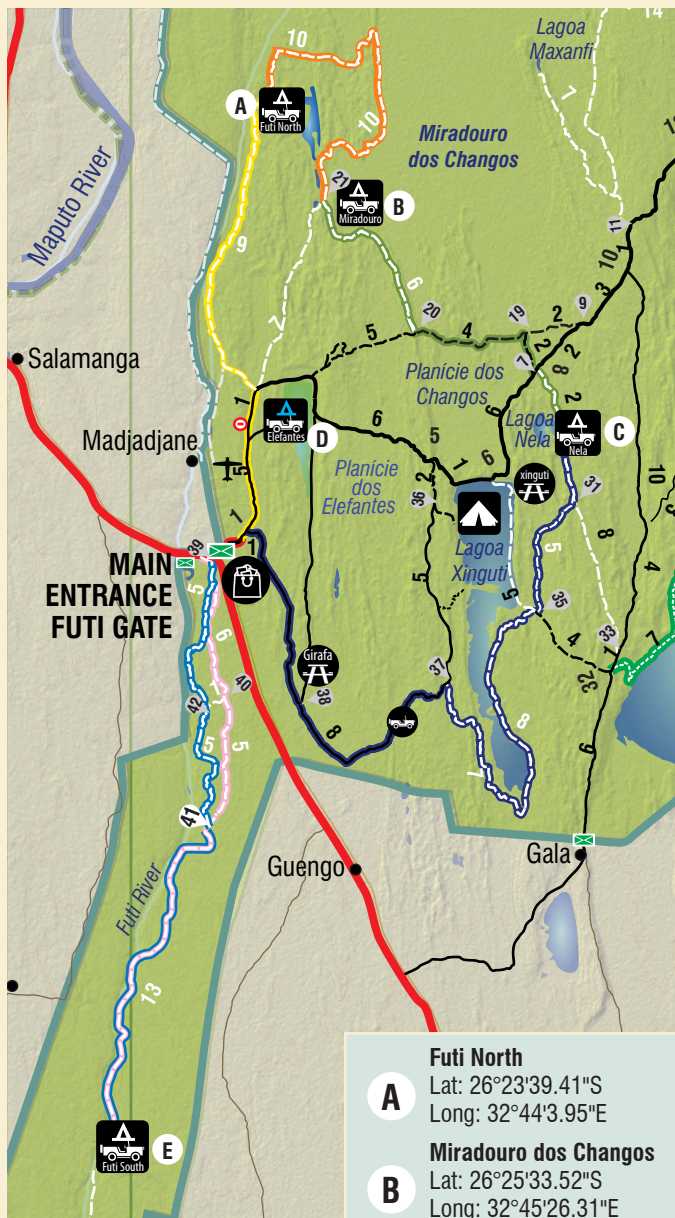




PARQUE NACIONAL DE MAPUTO

4x4 TRAILS & CAMPSITES

LUBOMBO
Transfrontier Conservation and Resource Area



4X4 PERMIT ROUTES

- Day 1 : (16km- start)
- Day 2: (20km)
- Route 3 : (10km)
- Route 4 : (50km)
- Route 5 : (43km)
- Route 6 : (23km-exit)
- Overnight Destination (#)
- (circulation always clockwise)

- Futi North**
A
Lat: 26°23'39.41"S
Long: 32°44'3.95"E
- Miradouro dos Changos**
B
Lat: 26°25'33.52"S
Long: 32°45'26.31"E
- Lagoa Neta**
C
Lat: 26°29'46.21"S
Long: 32°50'9.65"E
- Elefantes Plains**
D
Lat: 26°29'47.76"S
Long: 32°43'50.97"E
- Futi South**
E
Lat: 26°42'45.40"S
Long: 32°40'50.22"E

Maputo National Park access by 4x4 vehicle only

Drivers must be trained in the use of 4x4 vehicles.
Non-4x4 vehicles will be turned away.
Tyre pressure must be at 180 kPa or lower.
Penalties and fees apply for non-compliance and recovery attempts.
Visitors acknowledge risks and dangers of wildlife, remote area and limited communications.

PARQUE NACIONAL DE MAPUTO

NO ENTRY ALLOWED AFTER 17:00 WITHOUT PRIOR ARRANGEMENTS

Gate times

October to March
Entry: 06:00 – 16:00
Exit: 18:00
Beach access: 05:00 – 18:00

April to September

Entry: 07:00 - 16:00
Exit: 17:00
Beach Access: 05:00 - 17:00

Note: limited phone signal within Maputo National Park – enter at own risk

HIGHLIGHTS:

Breath-taking bush landscapes
Stunning sand-forests and floodplains
Vivid wildlife encounters
Exquisite marine life
Rare and endangered species

ACCESS

68 km from Maputo, 50min drive on tarmac road.
40 km from the South African border post at Ponta do Ouro, 30min drive on tarmac road.

CLIMATE: TROPICAL SAVANNA

cool dry winters
(Apr - Sep) 14-26°C
warm wet summers
(Oct - Mar) 26-30°C

annual rainfall 690-1000mm

BEHAVIOUR NEAR WILD ANIMALS

Do not drive off the road
Do not follow the elephants too closely or block their path
Do not make a noise or rev the engine
Move away slowly when animals approach
Elephants always have right of way

MAPUTO NATIONAL PARK 4X4 SAFARI AND CAMPSITES



ELEFANTES

7 km from the gate
6 stands

This is the closest campsite to the gate, being only 7km into the park. To get to the site one drives through Terminalia woodland and sand thicket forests until the edge of the elephant plains which are marked by striking white sandy patches that are visited by many animals. The campsites are set back underneath large trees with a communal ablation which looks over the grasslands of Planicie dos Elefantes.

Facilities

Braai / Barbecue
Environmental ablations
Water tap (solar system)

Price per space per night:
400 MZN



Scale 1:500 @ A3

LAGOA XINGUTI LUXURY CAMPSITE

17 km from the gate
12 stands

In the heart of the Maputo National Park, the luxurious Xinguti campsite overlooks the lake and offers endless views of busy waterbirds including herons, rails, ducks, cormorants, egrets and waders. Look out for Yellow and Saddle-Billed Storks and the Great White Pelican. The stands in this birding hotspot are elevated and flat. There are six camp sites allowing two vehicles per site with gorgeous views over lake. Each site has a dedicated bush bathroom that is private, yet open to the elements.

Facilities

Braai / Barbecue
Water tap
Hot shower
USB plug point
Electricity: 24 hours
Toilet with water

Check-in time
2:00 PM

Check-out time
10:00 AM

Price per space per night:
600 MZN



LAGOA NELA

24 km from the gate
6 stands

This beautiful site is on the edge of Lake Nela, which has magnificent birdlife and a resident pod of over 20 hippos that make a big ruckus at sun set. The campsite is tucked into the forest in an elevated setting 15-20 metres above the lake's edge.

Facilities

Braai / Barbecue
Environmental ablations

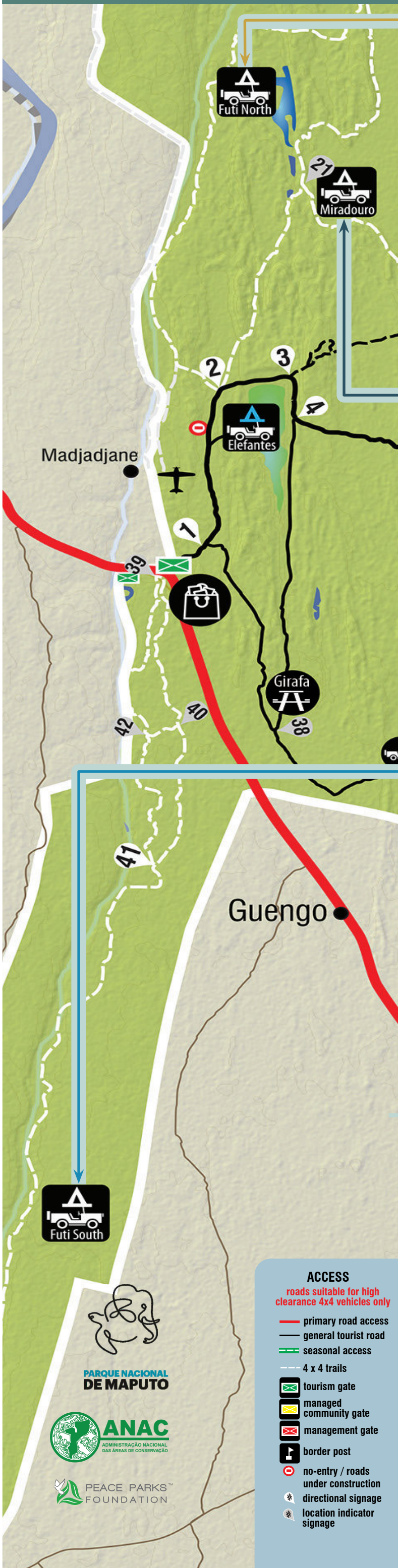
Price per space per night:
400 MZN



Lat: 26°29'46.21"S
Long: 32°50'9.65"E

Scale 1:400 @ A3

MAPUTO NATIONAL PARK 4X4 SAFARI AND CAMPSITES.



FUTI NORTH

17.5 km from the gate
6 stands

The drive to the Futi North campsite takes one in and out of the forest along the Futi River to a large stand of Pod Mahogany trees. The site overlooks a secondary water tributary to the Futi River and a small seasonal lake that is frequented by many animals. The stands are tucked into the trees above the grass plains, large water berry specimens and a seasonal lake system.

Facilities

Braai / Barbecue
Environmental ablutions

Price per space per night:
400 MZN



MIRADOURO 4x4 RUSTIC CAMPSITE

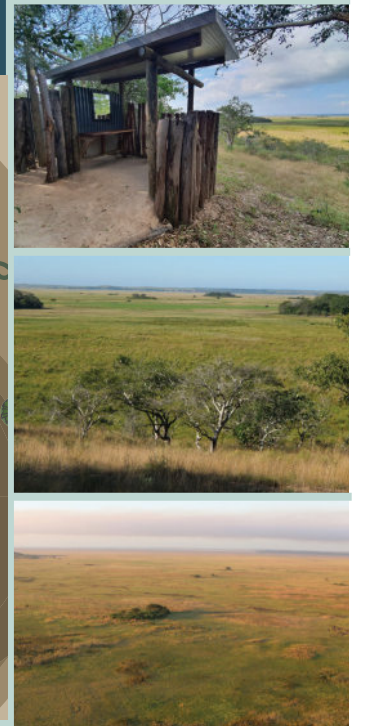
14 km from the gate
6 stands

Miradouro dos Changos means the Plains of the Reedbuck, and you will no doubt see many reedbuck from this beautiful elevated site, as well as herds of elephants, buffalo, blue wildebeest, waterbuck, giraffe, zebra and hippo wading through the marsh landscape. Six stands with space for a vehicle and rooftop tent or trailer are tucked into the trees about 30 meters above the plain, offering stunning views of the plains game feeding on the Hygrophilous grasslands which are permanently moist. The communal braai area is set on the very edge of the trees, offering spectacular sunrise views.

Facilities

Braai / Barbecue
Environmental ablutions

Price per space per night:
400 MZN



FUTI SOUTH

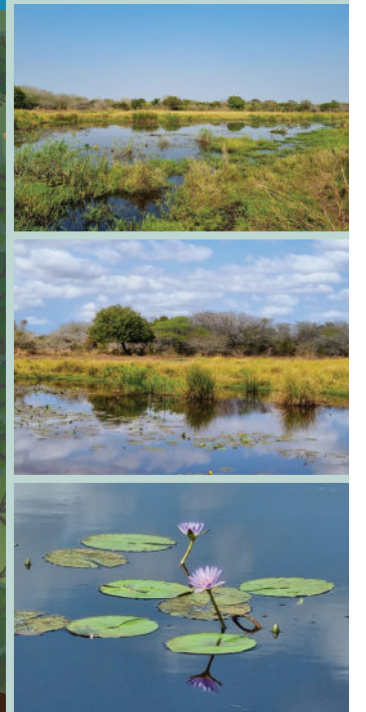
24 km from the gate
4 stands on the river and one large communal camp

Futi South is in the middle of the Futi Corridor that links Maputo National Park to Tembe Elephant Reserve. This site has seasonal access only and when it is very wet, the road is impassable. The communal site is set back into the forest. Sites 9, 8, 7 and 6 overlook a lily pond which is a tributary to the Futi River. The communal boma is set in the natural amphitheatre of a large stand of Pod Mahogany trees. This area offers excellent dry habitat birding.

Facilities

Braai / Barbecue
Environmental ablutions

Price per space per night:
400 MZN



DRIVING AREAS – off-road or driving on closed/no-entry roads is an offense and transgressors will be fined.

BEHAVIOUR – disrespectful behaviour including loud music and disobeying officials will not be tolerated.

Failure to comply with the provided regulations will result in prosecution.

MALARIA – Maputo National Park falls within a malaria zone. Please consult your medical practitioner and take the necessary precautions.

FAUNA & FLORA – no plant, animal, marine, natural or cultural items may be damaged or removed from the park. Killing or poaching of animals is strictly prohibited.

NOTES:

All rustic campsite have no water. You must bring your own. There is a bucket shower operated by a pulley system and an environmental dry toilet.

All stands have been designed to accommodate a vehicle with rooftop tent or trailer.

All sites have a communal boma or braai area.

Seasonal roads and sites are sometimes flooded depending on the water levels. Please be sure to check with the bookings office if they are accessible before embarking on any of these routes.

Check with reception about the availability of campsites and the condition of the access roads to them

Rules & regulations enforced under the Law 16/2014 of 2014 (revised 2017 - Law 05/2017) of Mozambique. Transgressions can result in prosecution or fines.

CODE OF CONDUCT

Adhere strictly to Park rules and regulations intended for your own safety. Fines may be issued by Management.



Tourism Department:

reservas@parquemaputo.gov.mz



Booking contact numbers:

+258 (85) 600 0900 or +258 (83) 333 6727

www.parquemaputo.gov.mz

Emergency contacts:

Park: +258 (85) 509 6721 or +258 (86) 668 6317

Prices could change due the change of the law.

- ACCESS**
roads suitable for high clearance 4x4 vehicles only
- primary road access
 - general tourist road
 - seasonal access
 - - - 4 x 4 trails
 - tourism gate
 - managed community gate
 - management gate
 - border post
 - no-entry / roads under construction
 - directional signage
 - location indicator signage

PARQUE NACIONAL DE MAPUTO

