



PARQUE NACIONAL DE MAPUTO



06:00 – 18:00

(October to March)

07:00 - 17:00

(April to September)

05:00 – 18:00

(October to March)

05:00 - 17:00

(April to September)

NO ENTRY ALLOWED AFTER 16:00 WITHOUT PRIOR ARRANGEMENTS

'Note: limited phone signal within MNAP – enter at own risk'



BACKGROUND AND HISTORY

The Lubombo Transfrontier Conservation and Resource Area (LTFCA) includes four different areas in three countries: Mozambique, South Africa and eSwatini. LTFCA spans a total range of 1,116,170ha. The Mozambique component is made up of Maputo National Park (MNAP) a 1,728km² protected area spanning coastal, terrestrial, and marine ecosystems in the southern-most region of Mozambique.

LTFCA is part of the Maputaland Centre of Endemism - an area in which the ranges of unique species overlap. This 1,700,000ha region covers parts of Mozambique, South Africa and eSwatini. Its conservation value is internationally recognised as it contains high species richness and endemism – native and naturally occurring only in that specific habitat. It forms part of the Maputaland-Pondoland-Albany biodiversity hotspot as well as South East African Coast Endemic Bird Area.

MNAP offer a scenic combination of land and ocean, plains and hills covered by woodland, marshes, grassland and forest-capped ridges as well as turquoise seas and beaches of fine white sand with forest-fringed coastal dunes. The tropical Mozambique Plain developed as a result of the southward-flowing warm Mozambique and Agulhas currents. These special conditions allow for tropical plants and animals to flourish in a sub-tropical environment.

Several distinct waterbodies define the fresh and saline coastal lake system area. Rivers include the Futi and Maputo. The largest lakes are Lagoa Piti, Xinguti and Munde. Riverine and estuarine wetland systems provide a special habitat for various communities of species. These include Seagrass beds, mangrove, saline and freshwater hygrophilous (water-growing) grasslands, reed and sedge beds as well as swamp forest. The marine shoreline with its sandstone reefs supports diverse coral communities and rich sea life.

HIGHLIGHTS:

- Breath-taking beach & bush landscapes
- Stunning sand-forests and floodplains
- Vivid wildlife encounters
- Exquisite marine life
- Rare and endangered species

ACCESS

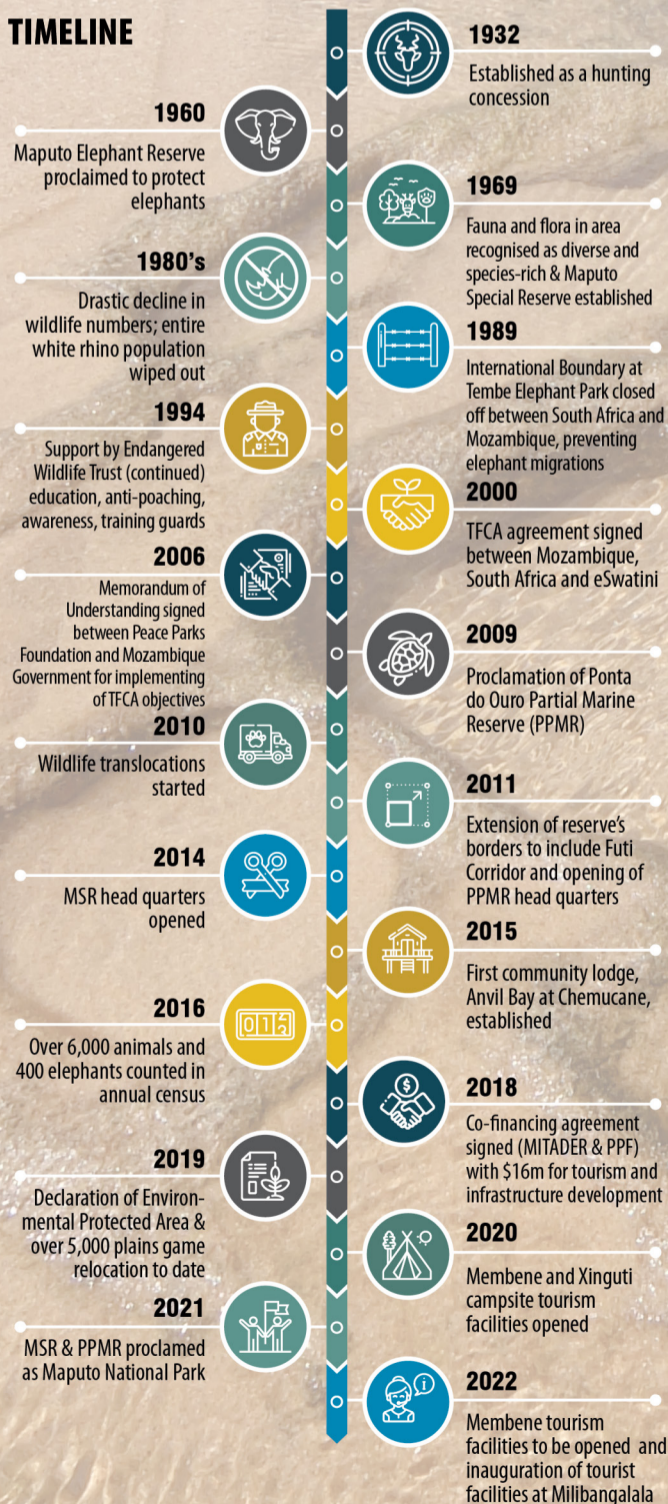
- 68km from Maputo, 50min drive on tarmac road.
- 40km from the South African border post at Ponta do Ouro, 30min drive on tarmac road.

FAUNA & FLORA

The vegetation, topography and geology of the MSR create specific terrestrial habitats with associated species these include:

- **Lakes:** hippo, crocodile, migratory birds.
- **Futi/Riverine vegetation:** reedbed, waterbuck, and elephant.
- **Lacustrine reedbed:** reedbed.
- **Hygrophilous grassland such as the Futi Valley:** important for both wildlife and neighbouring human populations. It remains permanently moist, providing water and green forage for livestock and wildlife well into the dry season;
- **Dune forest:** important for birds, snakes and elephants. Being very narrow in places, this type of forest enhances the spread of genetic material especially for less mobile plants and animals;
- **Dune grassland:** towards the eastern extremity, the palm veld grades into open grassland;
- **Open woodland:** nyala, bushbuck, giraffe, blue wildebeest, zebra, impala, warthog and elephant.
- **Wooded grassland:** bushpig, red and grey duiker, steenbok and jackal;
- **Sand forest:** tall trees; inhabited mostly by suni, leopard and vervet monkeys;
- **Sand thicket:** 2m to 5m high; inhabited mostly by duikers and spurfowl.
- **Swamp forest:** a rare and sensitive habitat type; some with closed canopy (15-25m high).

TIMELINE



CLIMATE: TROPICAL SAVANNA

warm wet summers (Oct - Mar) 26-30°C cool dry winters (Apr - Sep) 14-26°C

annual rainfall 690-1000mm

BEHAVIOUR NEAR WILD ANIMALS

- Do not drive off the road
- Do not follow the elephants or sea turtles and approach too closely
- Do not make a noise or rev the engine
- Move away slowly when animals approach
- Do not block their path
- Elephants and turtles always have right of way

ACCOMMODATION FACILITIES

Ponta Chemucane

- ★★★★★ Anvil Bay Lodge.
- 11 x Units (22 Bed)

Ponta Milibangalala - Montebelo

- ★★★★★ Eco-resort
- 16 x Bungalows (38 Bed)
- Swimming pool, restaurant and conference room

Ponta Membene

- 24 Chalets (80 beds),
- 7 x Campsites with ablutions (each 6 pax)
- 1 x Group campsite (up to 12 pax)
- Restaurant and Bar
- Day visitor facilities, picnic area and boat launch area

Lagoa Xinguti

- 6 x Serviced campsites (each 6 pax)

4x4 Game Drive Network

- 5 x Rustic campsites for 4x4 trails (each 12 pax)
- 196km of 4x4 trails



Tourism Department:

reservas@parquemaputo.gov.mz

Booking contact numbers:

+258 (85) 600 0900 or +258 (83) 333 6727

www.parquemaputo.gov.mz

Emergency contacts:

Park: +258 (85) 509 6721 or +258 (86) 668 6317

Parque Nacional de Maputo parquenacionaldemaputo

CODE OF CONDUCT

Adhere strictly to Park rules and regulations intended for your own safety. Fines may be issued by Management.



- **DRIVING AREAS** – off-road or driving on closed/no-entry roads is an offense and transgressors will be fined.
- **BEHAVIOUR** – disrespectful behaviour including loud music and disobeying officials will not be tolerated. Failure to comply with the provided regulations will result in prosecution.
- **MALARIA** – MNAP falls within a malaria zone. Please consult your medical practitioner and take the necessary precautions.
- **FAUNA & FLORA** – no plant, animal, marine, natural or cultural items may be damaged or removed from the park. Killing or poaching of animals is strictly prohibited.

Rules & regulations enforced under the Law 16/2014 of 2014 (revised 2017 - Law 05/2017) of Mozambique. Transgressions can result in prosecution or fines.

Maputo National Park

ACCESS

roads suitable for high clearance 4x4 vehicles only

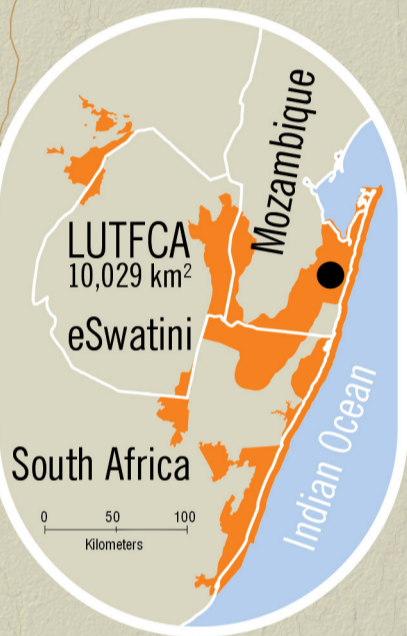
- primary road access
- general tourist road
- seasonal access
- 4 x 4 trails (permit required)
- management roads
- ↑ Preferred route to Ponta Chemucane
- ↑ Preferred route to Ponta Membene
- ↑ Preferred route to Ponta Milibangalala
- ↑ Preferred route to Ponta Dobela
- ↑ Preferred route to Lagoa Xinguti

— Maputo Environmental Protected Area (EPA)

- tourism gate
- managed community gate
- management gate
- border post
- no-entry / roads under construction
- directional signage
- location indicator signage

MNAP access by 4x4 vehicle only

Driver's responsibility to ensure that vehicle is 4x4.
Driver must be trained in use of 4x4. Non-4x4 vehicles will be turned away. Tyre pressure must be at 180 kPa or lower. Penalties and fees apply for non-compliance and recovery attempts. Visitors acknowledge risks and dangers of wildlife, remote area and limited communications.

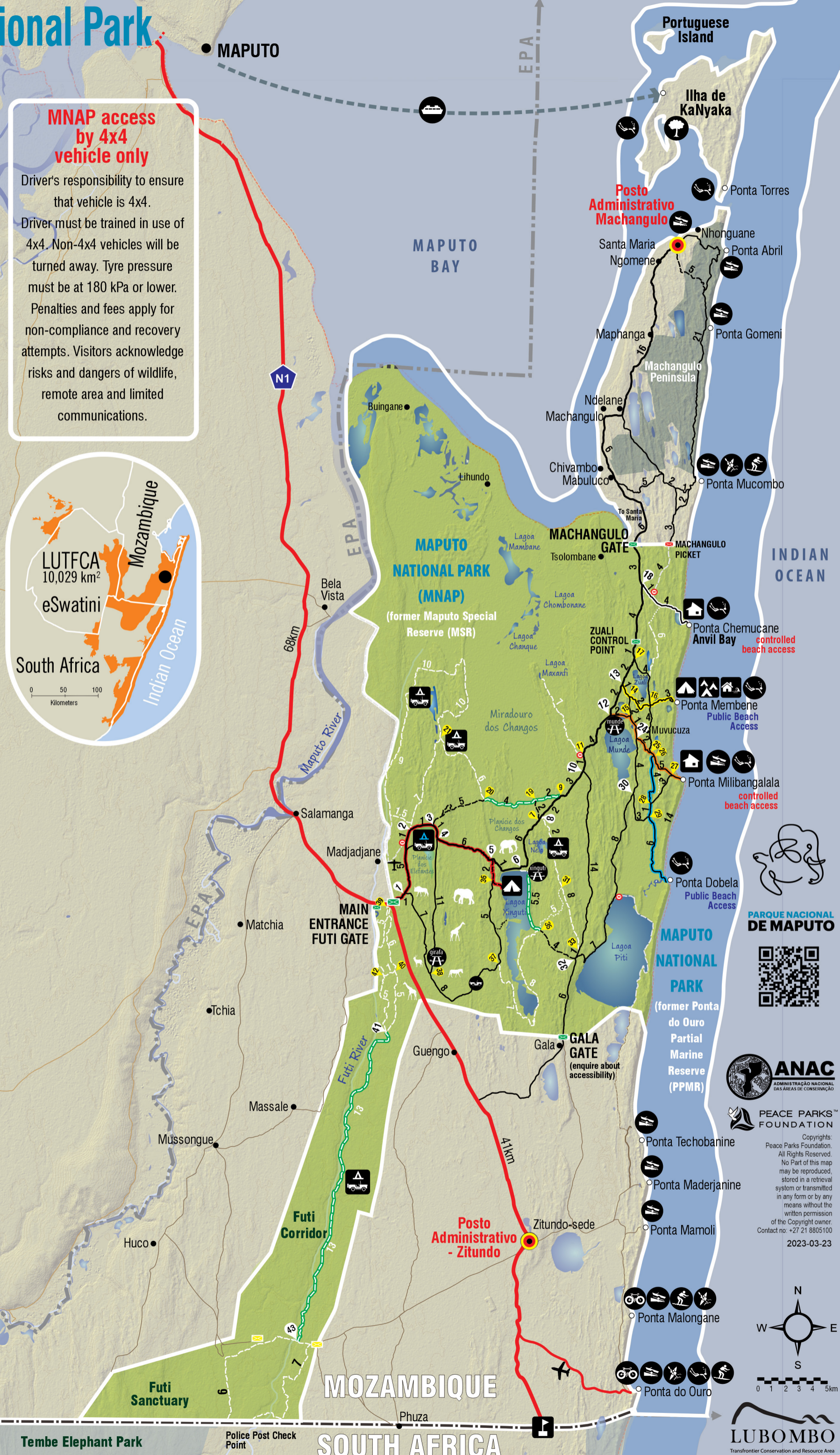


ACCOMMODATION

- lodge
- bungalow / villa (self catering unit)
- serviced campsite
- group campsite
- 4x4 "wet" rustic campsite
- 4x4 "dry" rustic campsite

ACTIVITIES

- 4x4 access
- boat launching site (different T&C for all)
- kayaking
- fat biking
- snorkeling
- scuba diving
- hiking
- mangrove forest excursions
- surfing
- shuttle service
- picnic area

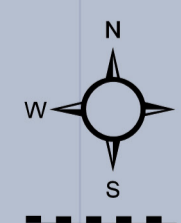


PARQUE NACIONAL DE MAPUTO



PEACE PARKS™ FOUNDATION

Copyrights: Peace Parks Foundation. All Rights Reserved. No Part of this map may be reproduced, stored in a retrieval system or transmitted in any form or by any means without the written permission of the Copyright owner. Contact no. +27 21 8805100 2023-03-23



LUBOMBO
Frontier Conservation and Resource Area

Ndumo Game Reserve

Tembe Elephant Park

Police Post Check Point

SOUTH AFRICA